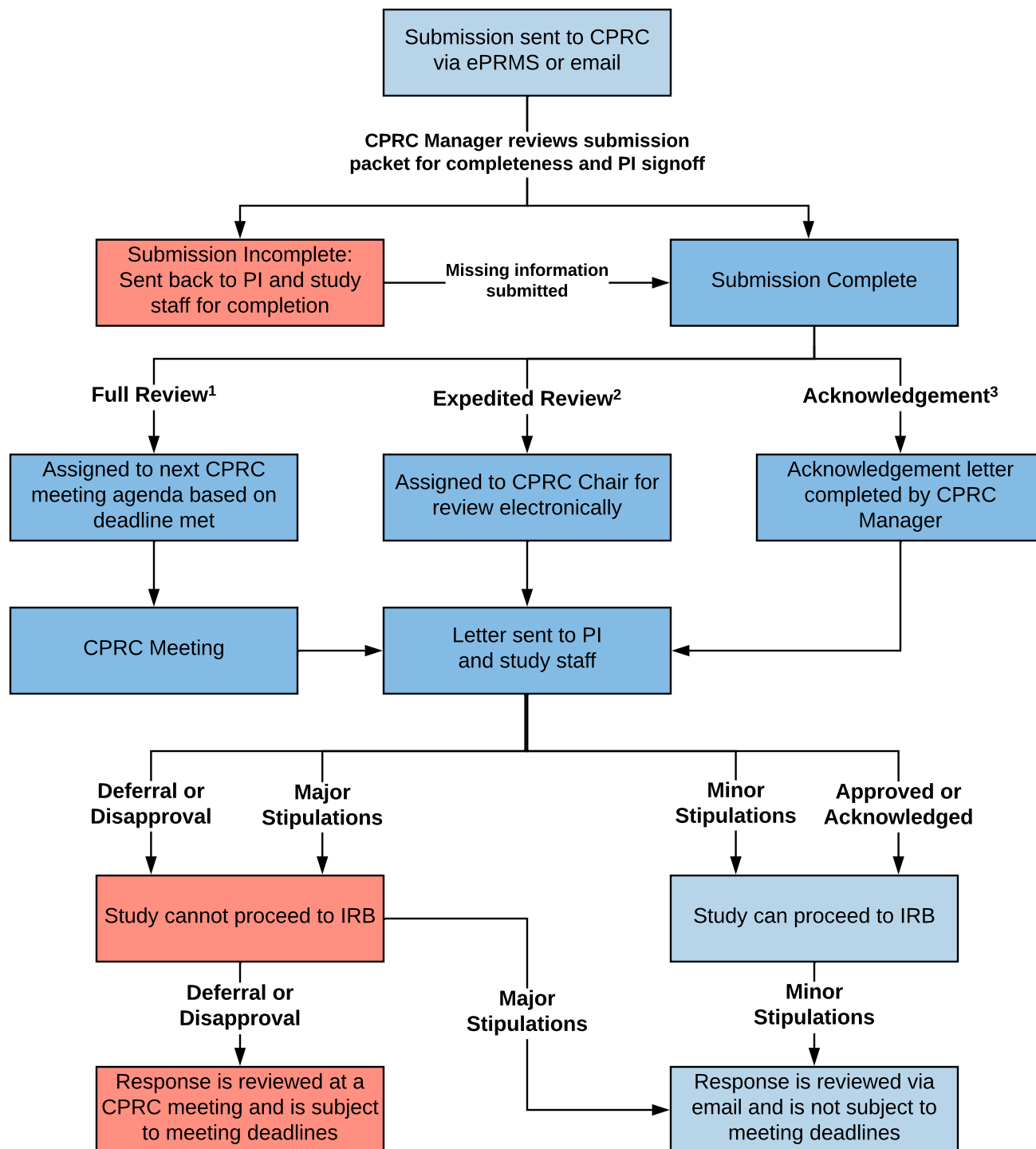


CPRC Initial Review Process



1. **Full Review**: Protocols other than those eligible for expedited review or acknowledgment.
2. **Expedited Review**: Retrospective chart review, retrospective sample review, data repository, and specimen-banking studies.
3. **Acknowledgement**: Protocols that have been previously approved by recognized peer-review bodies and their affiliated organizations, such as National Institute of Health (NIH), National Cancer Institute (NCI), Centers for Disease Control (CDC), and the National Clinical Trials Network (NCTN).